



2023 / 2024

Annual Report



Schools with a heart



TABLE OF CONTENTS

- 3. Our Mission**
- 4. Letter from the President**
- 5. Our Programs**
- 6. Our Impact by the Numbers**
- 7. Music & Arts**
- 9. Science, Technology, Engineering, & Math**
- 12. Supporting Teachers & Students**
- 14. Supporting Community Across the District**
- 16. Revenues & Expenditures**
- 17. Our Partners**
- 19. Your Support Is The Difference**
- 20. SBEF Board of Directors**
- 21. Donor Roll**

Our Mission

WHAT WE DO

San Bruno Education Foundation

We believe our public schools should be filled with a balance of core academics and enrichment opportunities that fuel our children's desire to learn.

WHO WE SERVE

The San Bruno Education Foundation (SBEF) is dedicated to ensuring every child in the San Bruno Park School District has enriching educational experiences.

SBEF also funds professional development opportunities for our teachers and educators, as well as organizes Community Pride Projects to beautify our schools. A well-rounded education that meets the needs of our modern world consists of all of these things. The current public education system does not provide funding for the enrichment opportunities needed to inspire our children. It is on us – the parents and the community – to make it happen. Learn more at sbefkids.org.



Dear Friends,

The San Bruno Education Foundation had another fantastic year supporting over 2,000 students in the San Bruno Park School District!

Thanks to supporters like you, the San Bruno Education Foundation was able to continue to fund and build upon successful existing programs for our students and teachers, while introducing new initiatives in the 2023-24 school year, in our core focus areas of Music & Arts, STEM (Science, Technology, Engineering, and Math), Teacher & Student Support, and Districtwide Community.

For Music & Arts, we continued to support the District's TK-8th music education program and were excited to help the District launch its new drama and dance program. We also were able to fund Parkside's beautiful new student-designed and -painted mural, which was unveiled this spring!

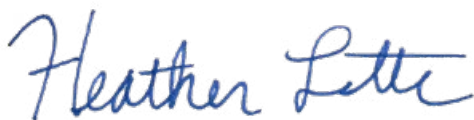
For STEM, we expanded our successful Lego Robotics program to include Parkside middle school students and held our second annual Lego Robotics competition.

To support teachers and students, we continued to support the District's "Communities of Practice" teacher teams, as well as offered scholarships for Parkside 8th graders to attend the spring Washington D.C. trip.

To foster community across the district, we hosted our annual Back-To-School BBQ for families and also gathered volunteers and rolled up our sleeves for beautification events at each of our school campuses this spring.

We are grateful to SBEF's many supporters, volunteers, and board members who enable SBEF to support these programs that enhance the educational experience for our San Bruno students. We are especially thankful for major donations from the San Bruno Community Foundation, Google.org, and Artichoke Joe's, along with the donations from many other generous businesses, families, and community members.

Sincerely,

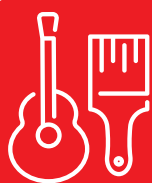


Heather Latta
President



Heather Latta (President) on the right, accompanied by Alexis Petru (Vice President) at our November 2023 Gala.

Our Programs



MUSIC
& ARTS



STEM



TEACHER
SUPPORT



COMMUNITY

Our Impact

A quantitative look at SBEF's impact in the 2023-24 school year.



2,000

TK - 8th students in the San Bruno Park School District that the San Bruno Education Foundation serves

Did you know SBPSD is:

30%

English Learners

12%

Students with Disabilities

42%

Socio-Economically Disadvantaged

\$400,000

Amount SBEF provided to the San Bruno Park School District to fund programs that otherwise would not exist

1,398

Elementary students who have access to weekly high-quality music educational classes

200

Students who participate in the music program at Parkside

115

English Learner students reclassified as English proficient

100

Volunteers – parents, kids, PTA leaders, and community members who worked on campus beautification projects during Community Pride Projects

70

5th-8th graders who participated in the Lego Robotics program

7

8th grade students who received scholarships for Parkside's Washington DC trip

6

drama performances performed by elementary and Parkside students

3

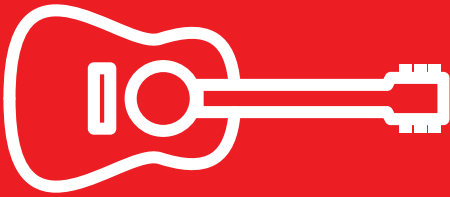
Parkside students who won 2nd place in their divisions in the San Mateo County science fair

1

Beautiful student-painted mural unveiled at Parkside this year

Music & Arts

Music and the arts play a vital role in education, nurturing creativity, critical thinking, and emotional expression while enriching students' overall academic and personal development.



Together, let's ensure all children can access high-quality music enrichment programs.



Elementary Music

For the second year in a row, SBEF supported the funding of a full-time music teacher to provide instruction in theory, instruments, and singing for upper-grade students at our elementary schools. We also continued to support the music program for the lower elementary grades through the nonprofit "Music for Minors" that gives younger students the foundation for further choral and instrumental music education. Students were invited to show off all they learned to their family members at their spring concerts!

Music at Parkside

This was also the second year SBEF funded a second music teacher at Parkside Intermediate, allowing over 200 students to participate in band, orchestra, and chorus. All the music teachers' and students' hard work culminated in impressive winter and spring concerts!

We were very proud of our music teachers & students in Intermediate and Advanced Band, Orchestra, and Choir for winning first place at the Santa Cruz Boardwalk Music

In The Parks festival in May! The Music In The Parks festival gives music students the opportunity to perform at different venues and learn from exceptional music educators. This was a meaningful performance, as it was the first time music students were able to participate in the Music In The Parks festival since the COVID-19 pandemic.



Mural at Parkside

Parkside Intermediate's beautiful new mural was unveiled this spring! Parkside's art teacher and a local muralist worked with 25 Parkside students to design and paint the mural, which celebrates school unity and community.



Drama & Dance

SBEF was thrilled to help support the School District's new drama, improv, and dance programs this year, provided through Pacifica's Spindrift School of Performing Arts. 3rd-5th graders could participate in a fall play, spring musical, and improvisation classes, while Parkside students could star in their own play and musical, as well as sign up for a dance class to meet their physical education requirement. Congratulations to our aspiring student actors on their wonderful performances!



Science, Technology, Engineering, & Math

Surrounded by biotech companies and Silicon Valley, the San Bruno community understands how early STEM education is essential to prepare children for the opportunities and challenges of a rapidly evolving tech-driven world.



Together, let's support STEM education in the San Bruno Park School District to equip our students with the knowledge and skills needed for tomorrow's technological world.

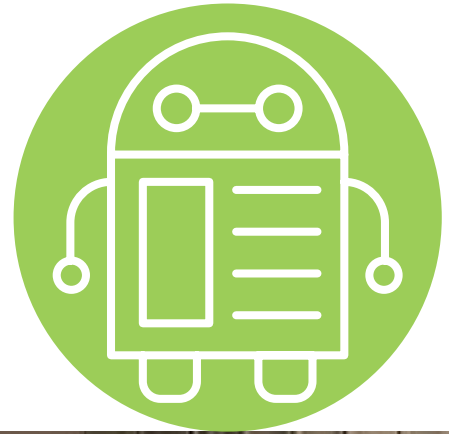
Lego Robotics Clubs at Elementary Schools

Lego Robotics Clubs: Building on the success of our afterschool Lego Robotics Clubs for 5th graders for the past two years, SBEF was excited to expand the program to Parkside Intermediate for the first time while continuing the clubs at the elementary schools for a third straight year. Over seventy 5th-8th graders met weekly to work in teams to design, build, and program their robots, following the First Lego League Curriculum.



Lego Robotics Competition

SBEF and the San Bruno Park School District coordinated our second annual Lego Robotics Competition in April, where the students could participate in various challenges and have a blast! The teams were observed and judged by volunteers from biotech company Abbvie and the Nueva High School robotics team. We congratulate all the students who participated and the winning teams, and we'll see you next year on the Lego mat!

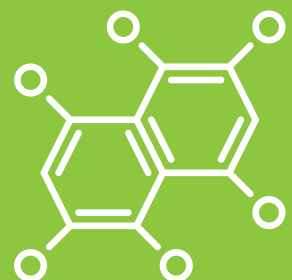
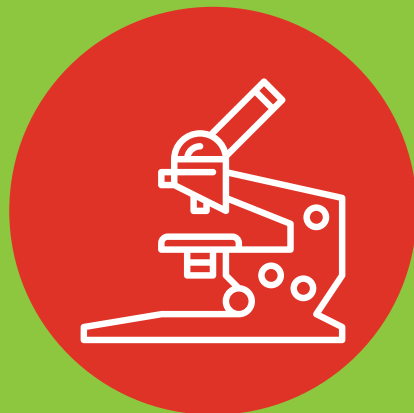
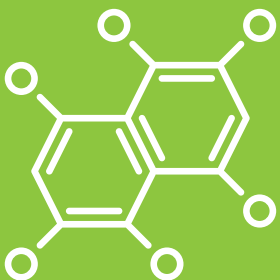


Science in the Classroom

Hands-on science experiments can help bring classroom science lessons to life, which is why SBEF helps fund science supplies for all our elementary schools and Parkside. SBEF is also supporting the District's new dedicated STEM Labs. As the District breaks ground on the first STEM labs at Allen and Portola, SBEF is funding printers, tables and chairs, experiment materials, and other equipment to inspire our budding scientists and engineers. We can't wait for there to be a STEM lab at all our elementary schools!

County Science Fair

For the third year in a row, SBEF supported 5th-8th grade students in participating in the San Mateo County STEM Fair. To assist these students in independently completing their science fair projects, SBEF volunteer and Portola parent Michelle Toft Graham provided workshops and matched students with volunteer mentors from AbbVie. About fifteen 5th-8th students submitted experiments, and three of our Parkside 6th graders won second place in their divisions!



Supporting Teachers and Students

Supporting teachers and students is vital to creating thriving schools where meaningful learning can take place, as both educators and learners need the resources, encouragement, and care to succeed.



Together, let's honor and support our teachers as they guide our children towards fulfillment and success.

Scholarships for Parkside's Washington DC Trip

SBEF provided seven 8th grade students at Parkside with full scholarships for the school's Washington DC trip in the spring! These students had an unparalleled learning experience, visiting U.S. historical sites, and witnessing the government in action.





Stipends for Leader Teachers

SBEF is proud to provide our teachers with professional development opportunities, technology, and other resources. For a second year in a row, SBEF supported the School District's "Communities of Practice" program, where groups of teachers assist each other to improve the instructional focus for English Learners, STEM, and Special Education. SBEF funded stipends for the teachers who led these groups at each school site. One key achievement of the English Learner team was to help support the reclassification of 115 students as English proficient.



Supporting Community Across the District

Building a sense of community in schools is essential for fostering belonging, support, and engagement among children and families, laying the foundation for both academic success and emotional well-being.

SBEF supported school and community events throughout the school year, including Parkside's first Panther Pride Day, where elementary school families could tour Parkside and learn about all the exciting things happening there. We hosted craft booths at San Bruno's holiday tree lighting and Posy Parade, and also sponsored a balloon artist at the District's Children's Day event.



Together, let's continue building a strong San Bruno community for our children - both on campus and in town.

Back-to-School BBQ

In August, SBEF kicked off the school year with our 2nd annual Back-to-School BBQ at City Park for school families. The event featured food, games, PTA booths, and free fingerprinting so parents could obtain the required background checks to volunteer at our schools.



Casino Night Gala

SBEF held its 2nd annual Gala fundraiser in November at Skyline College's Farallon Room, and it was a resounding success! Attendees had a great time playing casino-style games, listening to live music, and connecting with our San Bruno friends and neighbors – all in support of our San Bruno schools!



Community Pride Project Days

For the third year in a row, SBEF supported Community Pride Project Days at our schools, beautifying our school campuses, while bringing school families together. Over a hundred volunteers attended these events, including parents, kids, PTA/PTO leaders, and community members, and carried out the following campus improvement projects:

John Muir: Window washing and painting safety/direction lines

Parkside: Sprucing up the teacher's lounge

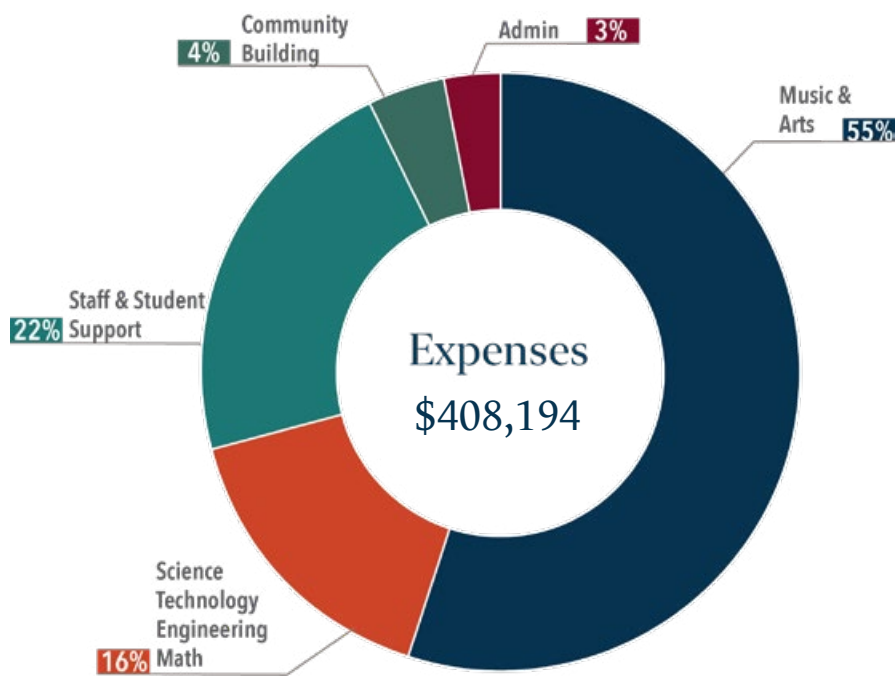
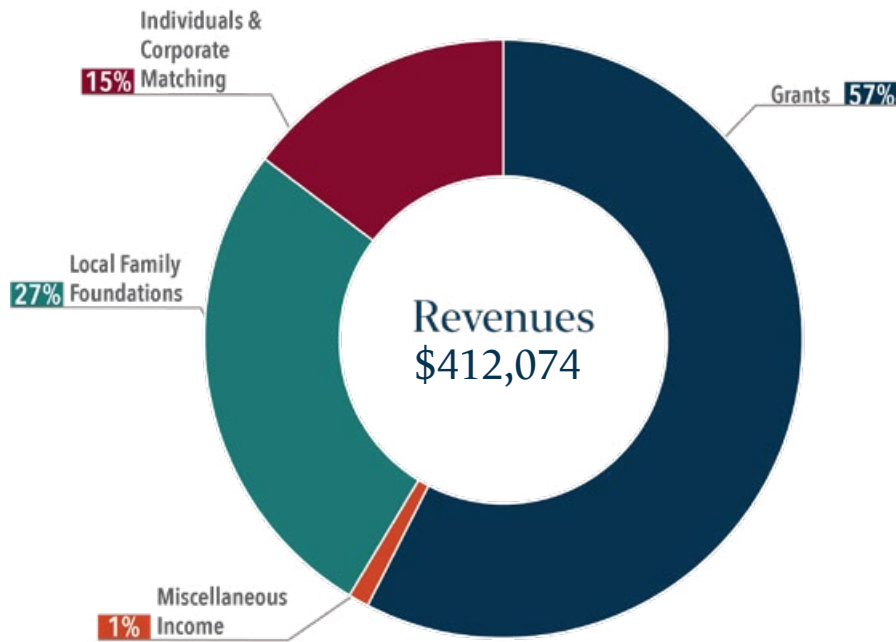
Portola: Painting the school hallways and future STEAM Classroom

Allen's Community Pride Project Day was postponed due to ongoing construction on campus, and Belle Air postponed their Project Day till fall, where volunteers will help put together their new "Zen Den," a special room where students can receive psychosocial support.



Revenues and Expenditures

July 2023 - June 2024



Our Partners

The San Bruno community, the “City with a Heart,” understands “it takes a village” to raise and educate our children. SBEF sincerely appreciates the businesses, organizations, community members, school staff and teachers, parents, and more who have joined together to support SBEF, San Bruno schools, and our students.



Together, let's continue to strengthen our community partners and businesses to support the collective effort of raising and educating our children.

Thank you to the **San Bruno Community Foundation (SBCF)** for their long-standing partnership and support of our music program, particularly helping to support funding for Parkside's second music teacher and for musical instruments. New this year, SBCF provided grant funding for the Parkside mural and Washington DC trip scholarship.

We are grateful for our partner **Google.org** for their continued commitment to supporting San Bruno schools through our music, drama, and science programs.

Thank you to our long-standing sponsor **Artichoke Joe's** for supporting our Lego Robotics program and Community Pride Project Days, as well as matching community donations during SBEF's fall fundraising campaign.

We also want to acknowledge the **San Bruno Lions Club** and the **Rotary Club of San Bruno** for their support and the time and energy they dedicate to projects for our students, teachers, and school staff.

SAN BRUNO
Community Foundation



Also, a huge thank you to the many amazing family and community volunteers who contribute so much to our schools!

Portola parent **Lorin Lee**

Portola parent **Michelle Toft Graham**

Nueva School teacher **Michelle Grau**

Nueva School Robotics team

AbbVie volunteers

Lions Club Member **Marty Medina**

San Mateo County Arts Commissioner & San Bruno resident **Stephen Seymour**

Allen PTA

Belle Air PTA

John Muir PTA

Parkside PTO

Portola PTA

Thanks
FOR YOUR SUPPORT



Your support is the difference



SBEF is only as strong as our support from the community

Get involved:

- **Donate:** Join our Schools with a Heart community as an SBEF Advocate (\$10/month or \$120/year) or SBEF Champion (\$50/month or \$600/year)
- **Volunteer:** SBEF always needs volunteers for
 - Event planning and coordination
 - IT and web maintenance
 - Outreach to businesses
 - and more!
- **Become a Sponsor:** Your business can sponsor us or donate an item or service to our annual gala, and increase visibility in the community!
- **Stay up-to-date:** Follow us on social media, read our blog, and sign up for our newsletter to keep up-to-date on our programs and events.



SBEF ADVOCATE:

SBEF Advocates pledge to
donate \$10/month or \$120/year.



SBEF CHAMPION:

SBEF Champions pledge to donate
\$50/month or \$600/year.



We want to extend a special thank you to SBEF board member, Bryan Vander Lugt, who resigned from our board this school year after making significant contributions to our San Bruno school community. During his seven years on the board, he helped establish our national-award-winning music education program and worked with community partners to establish our innovative remote learning initiative during the COVID-19 pandemic.

SBEF is excited to welcome Portola parent Kingsley Ma and John Muir parent Annie Yoshiyama to our Board of Directors this year!

SBEF Board of Directors

President
Heather Latta

Vice President
Alexis Petru

Secretary
Steven Rose

Chief Financial Officer/Treasurer
Makiko Sato

Board Member
Amando Balbuena

Board Member
Scott Curtner

Board Member
Annie Yoshiyama

Board Member
Kingsley Ma

Donor Roll

We are deeply grateful for the support provided by the following businesses and community members. In particular, we were blown away by the impressive impact made by matching gifts, including Artichoke Joe's commitment to double our first \$25,000 in matching contributions this year, and the multiple companies that matched their employees' giving.

CORPORATE GIVERS

(\$50,000-\$175,000)

- San Bruno Community Foundation
- Google.org
- Artichoke Joe's
- Welch Family Partnership

COMMUNITY LEADERS

(\$5,000 - \$20,000)

- Eric Ball & Alexis Petru
- Margaret Burchell
- Bobak Bakhtiari
- Marcus & Millichap Company Foundation

PREMIER CHAMPIONS

(\$1,801 - \$4,999)

- Jessica Inglima
- Robert Choy
- Scott Curtner

CHAMPIONS

(\$600 - \$1,800)

- Allan C. Johnson & Mary L. Johnson
- Amando & Erika Balbuena
- Andy & Linda Mason
- Andriana Shea
- Casey Robinson
- Callista Shepherd
- Emily Gibbs

- Gregory Pierce
- Josie McHale
- Karen & Tom Hamilton
- Morgan Shortle & Garrin Kimmell
- Todd & Renee Callantine
- Vaughn & Spencer Gregory
- Stacey Warren
- Stanley Mainzer
- Taku Kawane

ADVOCATES

(\$120 - \$599)

- Amanda & Craig Blanchette
- Alicia McHale
- Amanda Meadows
- Annie & Troy Yoshiyama
- Brock Roland & Caroline Cannizzaro
- Bryan & Andrea Vander Lugt
- Christophi Hogan
- Cynthia Jang
- Dawn Fanara
- David Ruelas
- Gary & Venice Chiueh
- Gabriele Lucchesi
- Hatamiya-Schieber Family Trust
- Heather & Jeremy Latta
- Helen & Simon Lee
- Henry Suen & Makiko Sato

“ International Brotherhood of Electrical Workers “ Michele Gauger
Local Union #617

“ Justin Read

“ Linda Tan

“ Michael Arcilla

“ Meghan Desai

“ Nina & Christopher Keys

“ Nicolas Allen

“ Nancy Ma

“ Omar Jabbour

“ Paul & Donna Lagomarsino

“ Peter Sherman

“ Regina Diaz

“ Raymond & Tamara Giusti

“ Robert & Michelle Graham

“ Roberta Hannibal

“ Rita Mauldin

“ Stephen & Lacey Chasseur

“ Sharon Hom

“ Soyan Leung

“ Silicon Valley Community Foundation

CONTRIBUTORS (\$50-119)

“ Anthony Halligan

“ Christine Ardema

“ Charlene Wieser

“ Henry Ma

“ John Berry

“ Jessica & Brian Carrillo

“ Julie Ebner

“ Joshua Kimbrell

“ Jonathan Masson

“ Jennifer Tung

“ Kingsley & Maggie Ma

“ Laura Alvarenga

“ Laurie Sanchez

“ Matt Duffy

“ Maria Iskiw

“ Marty Medina

“ Mona Nicholas

“ Neal Reiter

“ Serena Ip

“ Selina Tam

“ Shae Wilder

MATCHING GIFTS

“ AbbVie

“ Blue Shield of California

“ Charles Schwab

“ Google

“ Meta Payments

“ Microsoft

“ Pacific Gas & Electric Corporate

“ PlayStation Cares

“ Wells Fargo

GALA SPONSORS

“ San Bruno Lions Club

“ Rotary Club

“ Recology

GALA SILENT AUCTION DONORS

“ Kiss My Boba

“ Bel Mateo Bowl

“ Beauty Inked by Diana

“ Bread & Batter

“ British Swim School

“ Blo Blow Dry Bar in Daly City

“ Bill’s Lock Shop

“ San Bruno Sound Grove

“ Spark of Creation Studio

“ San Bruno’s Mathnasium

“ Mazra

“ Colagrossi Wines

“ One Love Cafe

